

FTH-PLC

Single Mode Planar Lightwave Circuit Splitters

FTH-PLC is a Planar Lightwave Circuit (PLC) Splitter, the commercial photonic design by FibreOptica Ltd, USA. Single Mode 1xN & 2xN Splitters divide uniformly optical signals from input ports to multiple outputs. The Splitters can also be operated in the reverse direction to combine multiple wavelengths into one or two fibers. The PLC Splitters providing excellent insertion loss, high uniformity and low PDL, are widely used in PON based FTTx applications. Bend insensitive single-mode fiber is used to ensure low bending loss in applications which require tight radius or significant handling by the technician. FTH-PLC is compliant with Telcordia GR1209/1221 standard.

Applications

- | Fibre optic equipments & systems
- | FTTH solutions
- | CATV networks
- | Data communications
- | Passive optical networks (ATM, WDM, Ethernet)

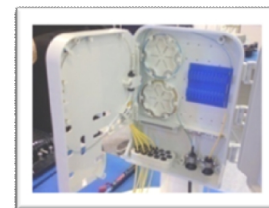
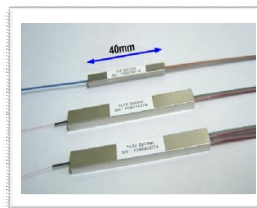
Key Features

- | Compact design
- | Ultra-low insertion loss and PDL
- | Excellent uniformity
- | High reliability
- | Wide wavelength range
- | Compliance with Telcordia GR1209/1221
- | Customized packaging and configuration

Packaging Types and Applications

Type A – Rectangular Case

The stainless casing device is especially packaged for an installation in a limited space. It can be easily placed into different types of terminal boxes and distribution boxes.



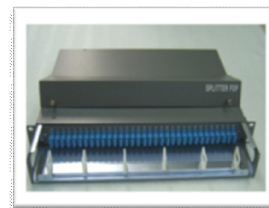
Type B – Cassette Modular Type

The compact box can easily be installed into box such as optical fiber distribution box and optical fiber junction box



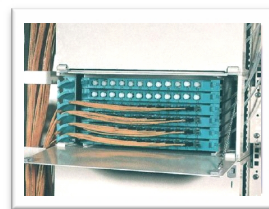
Type C – LGX Type

It can be directly placed into the optical fiber distribution frame (ODF) or optical fiber distribution box



Type D – Rackmount Type

Standard 1U rack-mount chassis is available. The rack-mount with customized dimension is also available upon request.



Optical Specification

Parameters	1x4	1x8	1x16	1x32	1x64	2x4	2x8	2x16	2x32
Operating Wavelength	1260nm ~ 1650nm								
Fiber Type	G.652D/G.657A or customer specified								
Insertion Loss Max	7.2	10.4	13.7	17.2	NA**	7.4	10.6	14.2	17.4
Uniformity* Max	0.6	0.8	1.2	1.5	NA**	1.2	1.2	1.8	2.0
PDL*, Max	0.2	0.2	0.3	0.3	NA**	0.2	0.3	0.3	0.3
Return Loss, UPC min	≥ 50dB								
Directivity, min	≥ 55dB								
Operating Temperature	-40 ~ 85°C								

* : All the parameters are tested at room temperature and do not include connector

** : call for details

Ordering Information

